

SCA 110

Solar Powered LED Obstruction Light



Features

- Low intensity Type A obstruction Light, ICAO Annex 14, Volume 1
- Totally self-contained with integrated solar and battery system
- Robust and lightweight polycarbonate housing
- High efficiency LED light with integrated photo sensor and flasher
- Long lifetime Nickel Metal Hydride (NiMH) or Lithium Ion (LiFePO4) battery
- Battery easy to replace in end of lifetime
- Wireless infrared service port for configuration and data collection
- Fully waterproof to IP 67 rating
- Charging connector for storage charging
- Ideal solution for telecom mast

Specifications

Light source	Luxeon™ Rebel LED lamp
Light Type	Low-intensity, Type A
Signal standard	ICAO Annex 14, Vol. 1
Intensity	adjustable from 3 to 30 cd (default 10 cd)
Vertical divergence	10° as per ICAO requirement
Signal colours	Red, green, yellow, white
Battery	6V / 26 Ah NiMH, or 6V / 22.5 Ah LiFePO4
Solar Panels	Total power 4.5 W
Power Consumption	300 mW when steady on 6 mW between flash and during daytime
Housing	UV stabilized Polycarbonate
Temperature range	-40°C to +50°C
Waterproof rating	IP 67
Weight	4.2 kg

Standard functions

- Can be programmed for steady on or flashing
- Operates from dusk to dawn or 24h
- Microcontroller that controls and monitors light and power system
- Integrated monitoring of LED output with alarm
- Data logging and event log

Advanced options

- Optional GPS sync for synchronizing of lights
- Optional built-in GSM monitoring with automatic reporting by GSM text messages
- Light on Demand function by SMS
- Sabik Easy Programmer to configure functionality
- WebSCADA server for system management

Easy Programmer

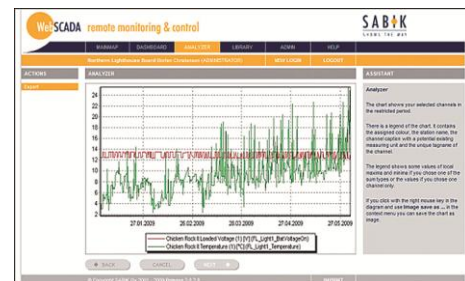


Portable keypad and display unit enabling configuration of lantern parameters as well as reading data logs.

Options / Accessory matrix		
Pos	Code	Description
1	GPS	GPS Sync unit
2	GSM	GSM remote monitoring
3	SEP	Easy Programmer



Picture 1 - SCA 110 installed in mast



Picture 2 - WebSCADA server system

Technical dimensions

